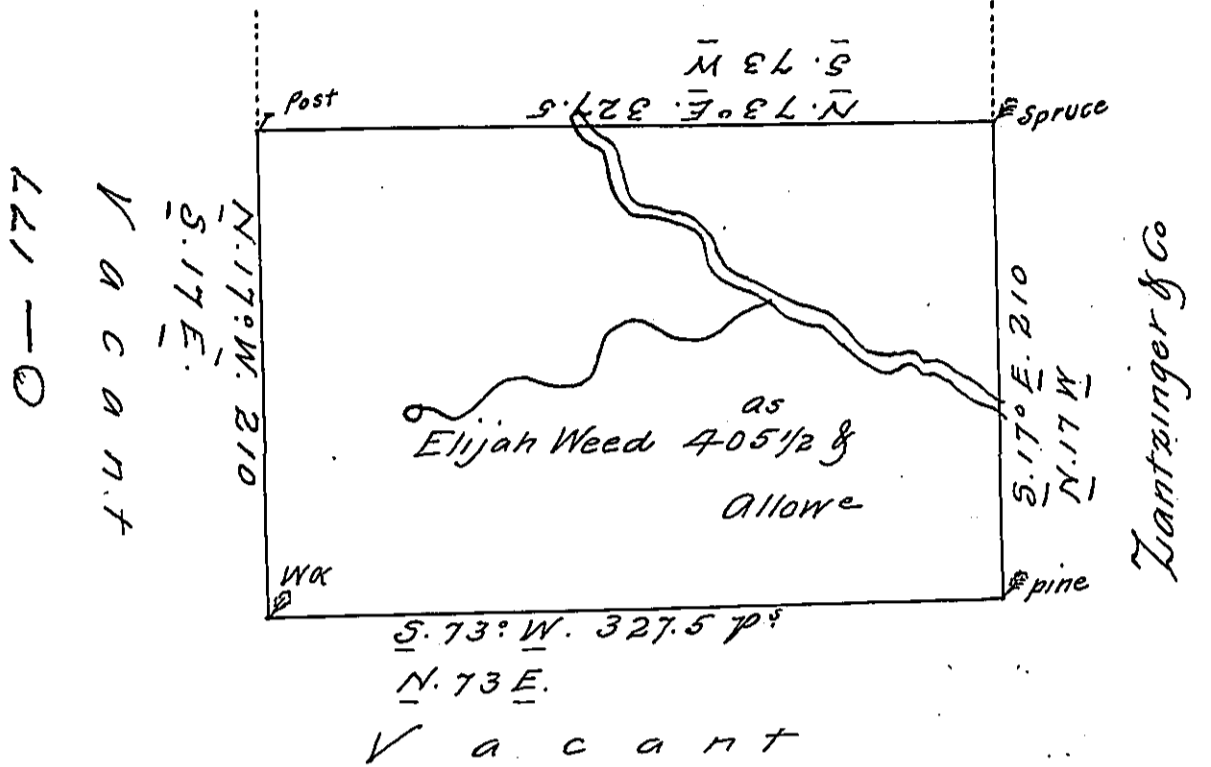


John M^c Nair



A Draught of a tract of land Called — Situate on the East Branch of
 Catawissey Creek joining land Surveyed for Adam Zantzinger & Comp^y
 in Catawissey (Late Augusta) Township Northum^d County. Containing
 four Hundred & five acres 1/2 & Allowance of six p Cent for Roads &c
 Surveyed the 14th Day of November 1786 in pursuance of a Warrant
 to Elijah Weed, Dated the 1st Day of July 1784.

by W^m Gray D. S.

Daniel Brodhead Esq^r
 Surv^r Gen^l

IN TESTIMONY that the above is a copy of the original remaining on file in
 the Department of Internal Affairs of Pennsylvania, made
 conformably to an Act of Assembly approved the 16th day of
 February, 1833, I have hereunto set my Hand and caused
 the Seal of said Department to be affixed at Harrisburg,
 this Fifteenth day of November 1910

Nancy Houch
 Secretary of Internal Affairs.